



CASE STUDY

Calvary Chapel Chino Hills journeys into the future of worship with Disguise and CCI Solutions

When Calvary Chapel Chino Hills in Chino, California invested in a permanent installation for its main auditorium, the church's creative team called on longtime partner CCI Solutions, an AVL integrator specializing in the worship market based in Tumwater, Washington.

In this case study you will see how CCI Solutions chose Disguise to drive content that engages congregants attending services in person and online.



Summary

CCI Solutions has been partnering with Calvary Chapel Chino Hills since 2012, working on various projects across its campus. In 2023, the church creative team installed an LED video wall stage for Easter services, and it proved such a success that the church decided to invest in a permanent LED stage system. The church gave CCI Solutions a specific list of technical requirements to match the creative team's design, and the AVL integrator went to work to deliver a reliable, easy to use system that met the creative teams' needs.



The challenge

The biggest challenge CCI Solutions faced was a quick turnaround in the summer of 2023 due to the church's packed use schedule. Efficient planning and the selection of powerful, tried-and-true equipment, along with a calendar of tasks and daily goals that coincided with the church use schedule, made possible on-time delivery of the new high-end video wall system.



The solution

A Disguise VX 4+ media server formed the backbone of the project, which features an expanse of Absen LED wall products. The project included adding multiple Absen Polaris series 2.5mm LED walls flanking an existing center LED wall that was installed in 2018. In addition to the banners, flown next to the center wall, was a 45-foot banner flown in front and above the stage proscenium as a lyric banner. Wrapping up the environment of 1-0 LED wall systems, the creative CCI Solutions team mounted vertical banners of LED wall modules to the platform wall to provide an extension of the side banners located directly underneath the image magnification LED walls, also installed in 2018. The final piece to the large project was providing a row of LED tiles around two stage platforms for the instrumentalists. CCI Solutions turned to the VX 4+ server as the industry standard media server for installations requiring reliable, large-scale content playback.

Disguise VX 4+ has numerous global applications to its credit and is now being deployed by the worship market seeking a flexible, high-quality but easy to use system to drive constantly changing content.

Having that powerhouse of a system enabled the church's creative team to map content as desired in one seamless graphical canvas on the broadcast-grade, high-definition LED display, with the help of the Disguise Designer software. Once the LED walls were programmed in the Brompton processors and content positioned in the graphical space, it was easy to take that information into the VX 4+ and begin pixel mapping. The creative team found that plugging X/Y coordinates into the software along with pixel size was easy to do. Having the ability to create a Photoshop map of the layout and snap that onto Disguise Designer software was extremely helpful, according to Mark Pearson, Design & Engineering Manager at CCI Solutions.



“Disguise was the heart of the system. Certainly, there are other solutions out there that provide pixel mapping, but the incredible Disguise system provides tons of power while being relatively easy to learn and use.”

Mark Pearson
Design & Engineering Manager

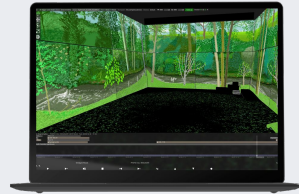
Conclusion

The team was able to remove the church's rented equipment on Sunday afternoon and Monday and have the new system up and running eight days later. One of the pastors remarked that the congregation was unaware that the work had been done because the install happened so quickly.

The combination of great teamwork on the part of the church creative team and CCI Solutions plus the selection of a Disguise VX 4+ as the backbone of the system made it possible for Calvary Chapel Chino Hills' new LED installation to be turned around quickly and easily, meeting all expectations.




Disguise equipment used



DESIGNER


Designer is the ultimate software to visualise, design, and sequence projects at every stage, from concept all the way through to showtime.

[Find out more](#) 



VX 4+

VX 4+ is the new industry-standard media server powering the world's biggest and most demanding virtual productions.

[Find out more](#) 

In Partnership with

Mark Pearson — Design / Engineering Manager

Jeff Busse — Project Manager

David Bradley — Lead Rigger

Kent Myers — Lead Installation Technician

Clay Gover, Ken Dyer, Nick Bradley — Installation Technician



Get in touch

**Curious to know more about us?
Want to master our production toolkit?
Need support on your project?**

Our team will be happy to speak to you,
whatever your query.

Get in touch

Get Started